

PURPOSE AND CONTENTS OF THIS MAP

The designations shown on this motor vehicle use map (MVUM) were made by the responsible official pursuant to 36 CFR 212.51, and are effective as of the date on the front cover of this MVUM, and will remain in effect until superseded by next year's MVUM.

It is the responsibility of the user to acquire the current MVUM. This MVUM shows the National Forest System roads, National Forest System trails, and the areas on National Forest System lands in the White River National Forest that are designated for motor vehicle use pursuant to 36 CFR 212.51. This MVUM also identifies the vehicle classes allowed on each route and in each area; and any seasonal restrictions that apply on those routes and in those areas.

Designation of a road, trail, or area for motor vehicle use by a particular class of vehicle under 36 CFR 212.51 should not be interpreted as encouraging or inviting use or implying that the road, trail, or area is passable, actively maintained, or safe for travel. Motor vehicle designations include parking along designated routes and facilities associated with designated routes when it is safe to do so and when not causing damage to National Forest System resources. Seasonal weather conditions and natural events may render designated roads and trails impassable for extended periods. Designated areas may contain dangerous or impassable terrain. Many designated roads and trails may be passable only by high-clearance vehicles or four-wheel-drive vehicles. Maintenance of designated roads and trails will depend on available resources, and many may receive little maintenance.

This motor vehicle use map identifies those roads, trails, and areas designated for the motor vehicle use within the White River National Forest for the purpose of enforcing the prohibition at 36 CFR 261.13. This is a limited purpose. The other public roads are shown for information and navigation purposes only and are not subject to designation under the Forest Service travel management regulation.

These designations apply only to National Forest System roads, National Forest System trails, and areas on National Forest System lands.

Legend

- Roads Open to Highway Legal Vehicles
- Roads Open to All Vehicles
- Trails Open to Motorcycles Only
- Special Vehicle Designation (See Table)
- Seasonal Designation (See Table)
- Dispersed Camping (See Table)
- Interstate
- Highways, U.S. State
- Other Public Roads
- Short Route Identifier
- FS Campground
- Information Site
- Peaks
- Forest or Unit Boundary
- National Forest System Lands
- Non-National Forest System Lands within the National Forest
- Wilderness Areas
- Political Boundary
- Township and Range Lines
- Section Lines
- Lakes and Rivers

Scale: 0 0.5 1 2 3 4 Miles

EXPLANATION OF LEGEND ITEMS

Roads Open to Highway Legal Vehicles Only:
 These roads are open only to motor vehicles licensed under State law for general operation on all public roads within the state.

Roads Open to All Vehicles:
 These roads are open to all motor vehicles, including smaller off-highway vehicles that may not be licensed for highway use (but not to oversize or overweight vehicles under State traffic law).

Trails Open to Motorcycles Only:
 These trails are open only to motorcycles. Sidecars are not permitted.

Special Vehicle Designation:
 This symbol indicates the road or trail is open to classes of vehicles other than those listed above. Refer to the Seasonal and Special Designation Table for further instructions.

Seasonal Designation:
 This symbol, used in conjunction with one of the other road or trail symbols, indicates that the road or trail is open only during certain portions of the year. Refer to Seasonal and Special Designation Table for further instructions.

Dispersed Camping:
 This symbol is used along with a designated road or trail to indicate limited cross-country motor vehicle use within a specific distance of that route, solely for the purpose of dispersed camping. The dots indicate where this activity is permitted. They may be on the left, right, or both sides of the route. Refer to the Dispersed Camping Table for specifics.

Other Public Roads and Trails:
 Interstate
 Highways, U.S. State
 Other Public Roads

These symbols are used to show routes the Forest Service does not have jurisdiction over and has not designated for motorized use. These symbols are part of the reference layers showing connections to towns and cities outside the forest boundary.

Short Route Identifier:
 70333

This symbol is used for roads that are too short to show a symbol type on the map. The symbol contains the number of the road or trail. Users should refer to the corresponding number in the Short Route Table for designation information.

OPERATOR RESPONSIBILITIES

Operating a motor vehicle on National Forest System roads, National Forest System trails, and in areas on National Forest System lands carries a greater responsibility than operating that vehicle in a city or other developed setting. Not only must you know and follow all applicable traffic laws, you need to show concern for the environment as well as other forest users. The misuse of motor vehicles can lead to the temporary or permanent closure of any designated road, trail or area. As a motor vehicle operator, you are also subject to State traffic law, including State requirements for licensing, registration, and operation of the vehicle in question.

Motor vehicle use, especially off-highway vehicle use, involves inherent risks that may cause property damage, serious injury, and possibly death to participants. Drive cautiously and anticipate rough surfaces and features, such as snow, mud, vegetation, and water crossings common to remote driving conditions. By your participation, you voluntarily assume full responsibility for these damages, risks, and dangers. Take care at all times to protect yourself and those under your responsibility.

Much of the White River National Forest is remote. Medical assistance may not be readily available. Cellular telephones do not work in many areas of the White River National Forest. Take adequate food, water, first aid supplies, and other equipment appropriate for the conditions and expected weather.

ALWAYS REMEMBER TO RESPECT PRIVATE LAND! PROTECT YOUR PRIVILEGE. STAY ON DESIGNATED ROADS AND TRAILS AND IN DESIGNATED AREAS.

Read and understand this map in its entirety. If you have questions, please contact the White River National Forest for clarification.

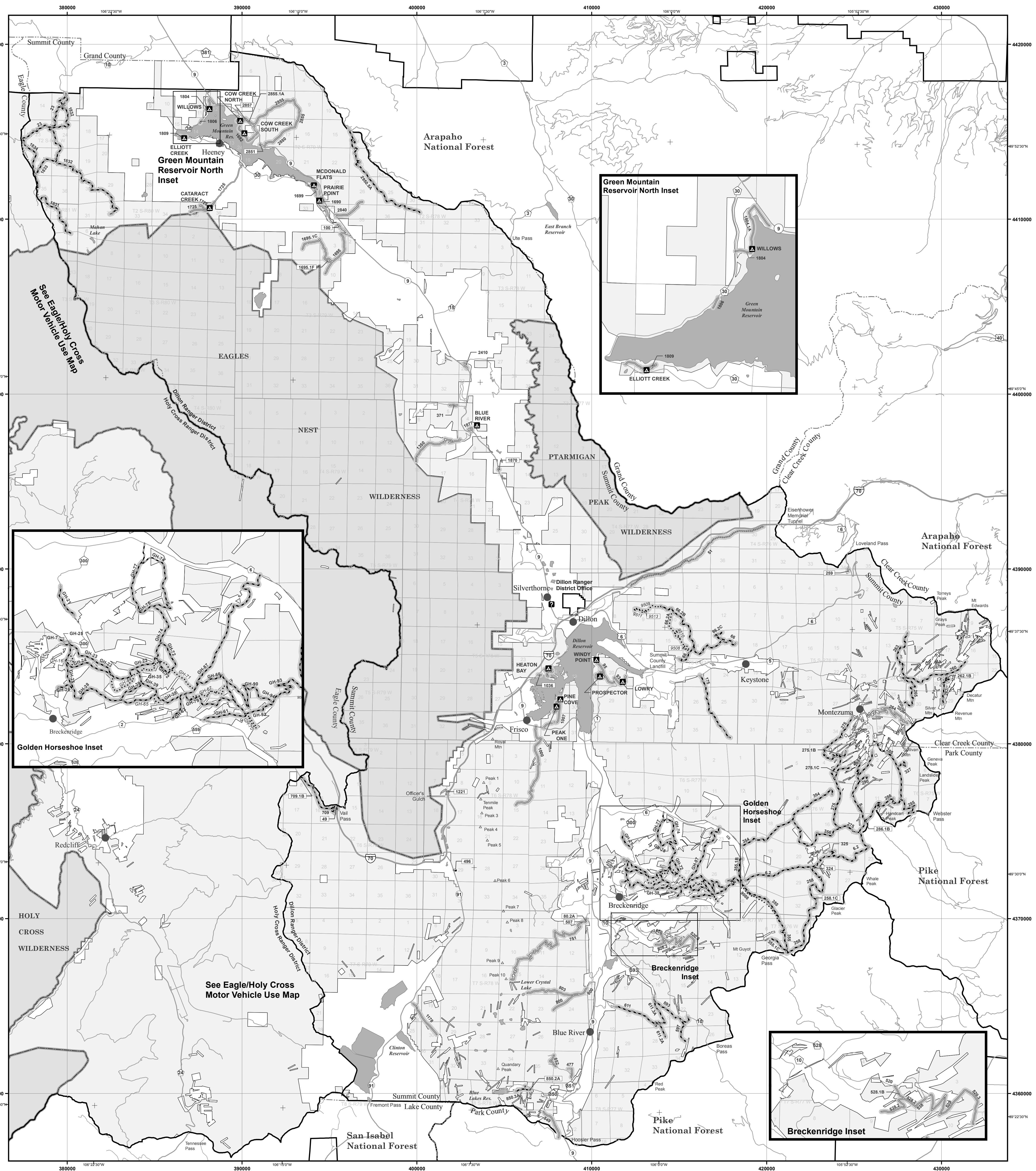
As a motor vehicle operator on a National Forest System road, trail, or area you must comply with this map, as well as all Federal, State, and local laws and regulations. Compliance with these rules is your responsibility.

BLANKET STATEMENTS FOR TRAVEL MANAGEMENT

Motor vehicles may be parked up to 30 feet from the edge of the road surface or facilities of the road or trail. Users should refer to the corresponding number in the Short Route Table for designation information.

BLANKET STATEMENT FOR TRAVEL MANAGEMENT EFFECTIVE DATES

This Motor Vehicle Use Map covers the summer season which occurs from May 21 to November 22. Please refer to the Winter Motor Vehicle Use Map for dates outside the summer season.



PROHIBITIONS

It is prohibited to possess or operate a motor vehicle on National Forest System lands on the White River National Forest other than in accordance with these designations (36 CFR 261.13)

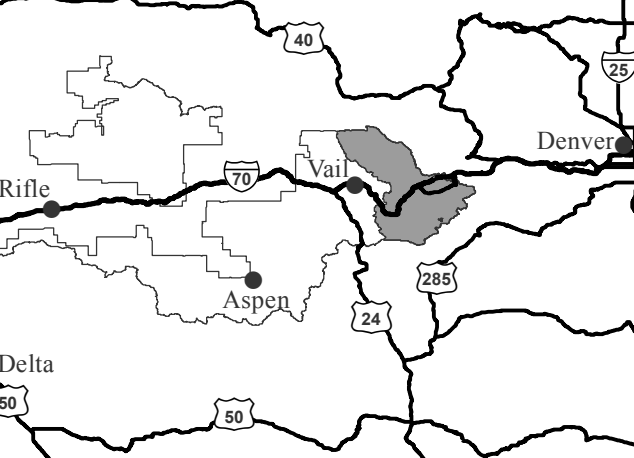
Violators of 36 CFR 261.13 are subject to a fine of up to \$5,000, imprisonment for up to 6 months, or both (18 U.S.C. 3571(e)). This prohibition applies regardless of the presence or absence of signs.

This map does not display nonmotorized uses, over-snow uses, or other facilities and attractions on the White River National Forest. Obtain forest visitor information from the local national forest office.

Designated roads, trails and areas may also be subject to temporary, emergency closures. As a visitor, you must comply with signs notifying you of such restrictions. A national forest may issue an order to close a road, trail or area on a temporary basis to protect the life, health, or safety of forest visitors or the natural or cultural resources in these areas. Such a temporary and/or emergency closure is consistent with the Travel Management Rule (36 CFR 212.52 (b), 36 CFR 261 subpart B).

The designation "road or trail open to all motor vehicles" does not supersede State traffic law.

VICINITY MAP



INFORMATION SOURCES

White River National Forest Supervisor's Office
 900 Grand Avenue
 Glenwood Springs, CO 81601
 Phone: (970) 945-2521

Dillon Ranger District
 680 Blue River Parkway, PO Box 620
 Silverthorne, CO 80498
 Phone: (970) 468-5400

White River National Forest
 Website: www.fs.usda.gov/whiteriver

In case of emergency, Dial 911



Travel and recreate with minimum impact. Respect the environment and the rights of others. Educate yourself plan and prepare before you go. Allow for future use of the outdoors by leaving it better than you found it. Discover the rewards of responsible recreation.

For more information on Tread Lightly!, go to www.treadlightly.org or call 1-800-966-9900.

The U.S. Department of Agriculture (USDA) prohibits discrimination in all its programs and activities on the basis of race, color, national origin, age, disability, and where applicable, sex, marital status, familial status, parental status, religion, sexual orientation, genetic information, political beliefs, reprisal, or because all or part of an individual's income is derived from any public assistance program. (Not all prohibited bases apply to all programs.) Persons with disabilities who require alternative means for communication of program information (Braille, large print, audiotape, etc.) should contact USDA's TARGET Center at (202) 720-2600 (voice and TDD). To file a complaint of discrimination, write to USDA, Director, Office of Civil Rights, 1400 Independence Avenue, S.W., Washington, D.C. 20250-9410, or call (800) 795-3272 (voice) or (202) 720-6382 (TDD). USDA is an equal opportunity provider and employer.

Seasonal Designations - Roads					
Route Number	Legend	Dates Allowed	Beginning Mile Post	Ending Mile Post	
264	Roads open to highway legal vehicles only, with Seasonal Designations	05/21-11/22	0.6	4.0	
275	Roads open to all Vehicles, with Seasonal Designations	05/21-11/22	0.6	7.2	
285	Roads open to all Vehicles, with Seasonal Designations	05/21-11/22	0.7	4.1	
593	Roads open to all Vehicles, with Seasonal Designations	05/21-11/22	2.7	4.6	
611	Roads open to all Vehicles, with Seasonal Designations	05/21-11/22	1.4	3.2	
1350	Roads open to highway legal vehicles only, with Seasonal Designations	05/21-11/22	0.8	3.3	
1725	Roads open to highway legal vehicles only, with Seasonal Designations	05/21-11/22	1.9	2.9	
GH-74	Roads open to all Vehicles, with Seasonal Designations	05/21-11/22	0.4	2.8	
GH-77	Roads open to all Vehicles, with Seasonal Designations	05/21-11/22	0.4	1.1	
100, 1000, 1178, 1726, 1806, 2410, 259, 2840, 2851, 2857, 371, 477, 507, 520, 520.3, 528.1B, 528.2, 538, 751, 80.2A, 800, 803, 849, 852	Roads open to highway legal vehicles only, with Seasonal Designations	05/21-11/22	Entire Length		
1007, 1007.1A, 1009, 1009.1A, 1009.1B, 1009.1C	Roads open to highway legal vehicles only, with Seasonal Designations	05/16-09/15	Entire Length		
1035, 1035.1A, 1035.1B, 1035.1C, 1035.1D, 1035.1E, 1035.1F	Roads open to highway legal vehicles only, with Seasonal Designations	05/16-10/13	Entire Length		
1036, 93, 93.1A, 95, 95.1B, 96, 96.1A, 96.1B, 96.1C, 96.1D, 96.1E	Roads open to highway legal vehicles only, with Seasonal Designations	05/21-09/15	Entire Length		
1690, 1690.1A, 1699, 1725.1C, 1809	Roads open to highway legal vehicles only, with Seasonal Designations	05/21-10/31	Entire Length		
1692, 1693, 1804, 1804.1A, 1877	Roads open to highway legal vehicles only, with Seasonal Designations	05/21-10/06	Entire Length		
1695, 1695.1C, 1695.1F, 2850, 2855, 2855.1A	Roads open to highway legal vehicles only, with Seasonal Designations	06/21-11/22	Entire Length		
175	Roads open to all Vehicles, with Seasonal Designations	06/21-11/22	Entire Length		
1831, 1832, 1833, 1834, 1870, 23, 258, 258.1C, 260, 262, 262.1B, 263, 265, 275.1B, 275.1C, 286, 286.1B, 289, 290, 2950.5A, 324, 325, 327, 354, 355, 355.1B, 355.1C, 356, 5, 597, 6.2, 611.2A, 611.3A, 850.2A, 850.3A, GH-7, GH-21, GH-22, GH-23, GH-24, GH-25, GH-26, GH-35, GH-38, GH-39, GH-61, GH-62, GH-66, GH-72, GH-75, GH-79, GH-87, GH-90, GH-93, GH-94	Roads open to all Vehicles, with Seasonal Designations	05/21-11/22	Entire Length		
49, 709.1B	Roads open to highway legal vehicles only, with Seasonal Designations	06/21-11/15	Entire Length		
66, 66.2B, 66.2C	Roads open to all Vehicles, with Seasonal Designations	07/01-11/22	Entire Length		
709	Roads open to all Vehicles, with Seasonal Designations	06/21-11/15	Entire Length		

Dispersed Camping Table

Motor vehicle use off of designated roads for the purpose of dispersed camping is permitted for up to 300 feet from the centerline of the road (both sides of the road), where not specifically prohibited, unsafe, or causing resource damage. Motor vehicles used for dispersed camping shall be the same vehicle as the road allows and shall be the same season as the road is open. Motorized access for dispersed camping is allowed only on National Forest System land.

This applies to the following roads: 1831, 1832, 1833, 1834, 23

Seasonal Designations - Trails					
Route Number	Legend	Dates Allowed	Beginning Mile Post	Ending Mile Post	
908B, GH-16, GH-44, GH-65, GH-67, GH-70, GH-71	Trails open to motorcycles, with Seasonal Designations	05/21-11/22	Entire Length		
66.2A, 950B, 9509, 9510, 9511, 9513	Trails open to motorcycles, with Seasonal Designations	07/01-10/10	Entire Length		

Seasonal and Special Designations - Trails					
Trails open to motor vehicles less than 62 inches in width at the widest point on the vehicle					
Route Number	Legend	Dates Allowed	Beginning Mile Post	Ending Mile Post	
51	Trails open to vehicles 62" or less in width, with Seasonal Designations	05/21-11/22	Entire Length		

Trails Too Short to be Seen Clearly on the Map				
Route Number	Route Designation	Dates Allowed	Length in Feet	
9508	Trails Open to Motorcycles, Seasonal	07/01-10/10	1900	
9513	Trails Open to Motorcycles, Seasonal	07/01-10/10	475	

Seasonal Designations - Campgrounds					
Campground	Route Number	Legend	Dates Allowed	Beginning Mile Post	Ending Mile Post
Blue River Cow Creek North Cow Creek South Willows	All	Roads open to highway legal vehicles only, with Seasonal Designations	05/21-10/06	Entire Length	
Cataract Creek Elliott Creek McDonald Flats Prairie Point	All	Roads open to highway legal vehicles only, with Seasonal Designations	05/21-10/31	Entire Length	
Heaton Bay	All	Roads open to highway legal vehicles only, with Seasonal Designations	05/16-10/13	Entire Length	
Lowry Prospector Windy Point Group	All	Roads open to highway legal vehicles only, with Seasonal Designations	05/21-09/15	Entire Length	
Peak One Pine Cove	All	Roads open to highway legal vehicles only, with Seasonal Designations	05/16-09/15	Entire Length	

Roads Too Short to be Seen Clearly on the Map					
Route Number	Route Designation	Dates Allowed	Length in Feet		
100	Roads Open to Highway Legal Vehicles Only, Seasonal	05/21-11/22	890		
1036	Roads Open to Highway Legal Vehicles Only, Seasonal	05/21-09/15	655		
1221	Roads Open to Highway Legal Vehicles Only, Yearlong	01/01-12/31	920		
1695.1F	Roads Open to Highway Legal Vehicles Only, Seasonal	06/21-11/22	1105		
1870	Roads Open to All Vehicles, Seasonal	05/21-11/22	270		
258.1C	Roads Open to All Vehicles, Seasonal	05/21-11/22	445		
259	Roads Open to Highway Legal Vehicles Only, Seasonal	05/21-11/22	645		
262.1B	Roads Open to All Vehicles, Seasonal	05/21-11/22	1000		
2851	Roads Open to Highway Legal Vehicles Only, Seasonal	05/21-11/22	450		
2857	Roads Open to Highway Legal Vehicles Only, Seasonal	05/21-11/22	220		
286.1B	Roads Open to All Vehicles, Seasonal	05/21-11/22	755		
324	Roads Open to All Vehicles, Seasonal	05/21-11/22	1105		
49	Roads Open to Highway Legal Vehicles Only, Seasonal	06/21-11/15	725		
496	Roads Open to All Vehicles, Yearlong	01/01-12/31	1160		
507	Roads Open to Highway Legal Vehicles Only, Seasonal	05/21-11/22	1720		
709.1B	Roads Open to Highway Legal Vehicles Only, Seasonal	05/21-11/15	420		
80.2A	Roads Open to Highway Legal Vehicles Only, Seasonal	05/21-11/22	1190		
850.2A	Roads Open to All Vehicles, Seasonal	05/21-11/22	1270		